

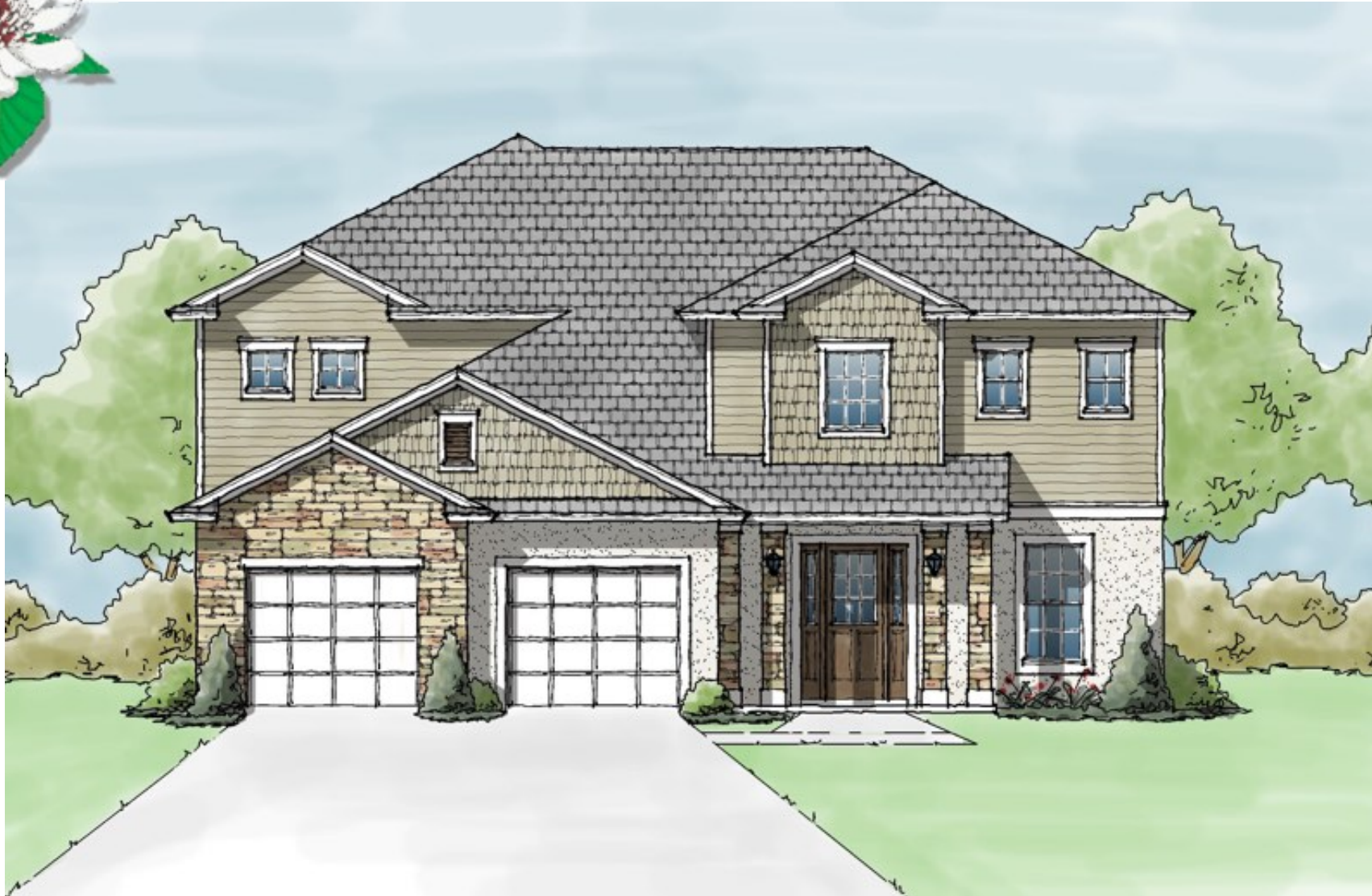
# Magnolia Homes, Inc.

Quality Concrete Block Homes  
Built with Care



## "The Mill Cove"

3824 sq. ft. (living area)  
50' wide x 65' deep



CRC 057354

[www.magnoliahomesflorida.com](http://www.magnoliahomesflorida.com)

Artist's rendering only.  
All dimensions approximate.  
See construction blueprints for details.  
Pricing subject to change at any time.

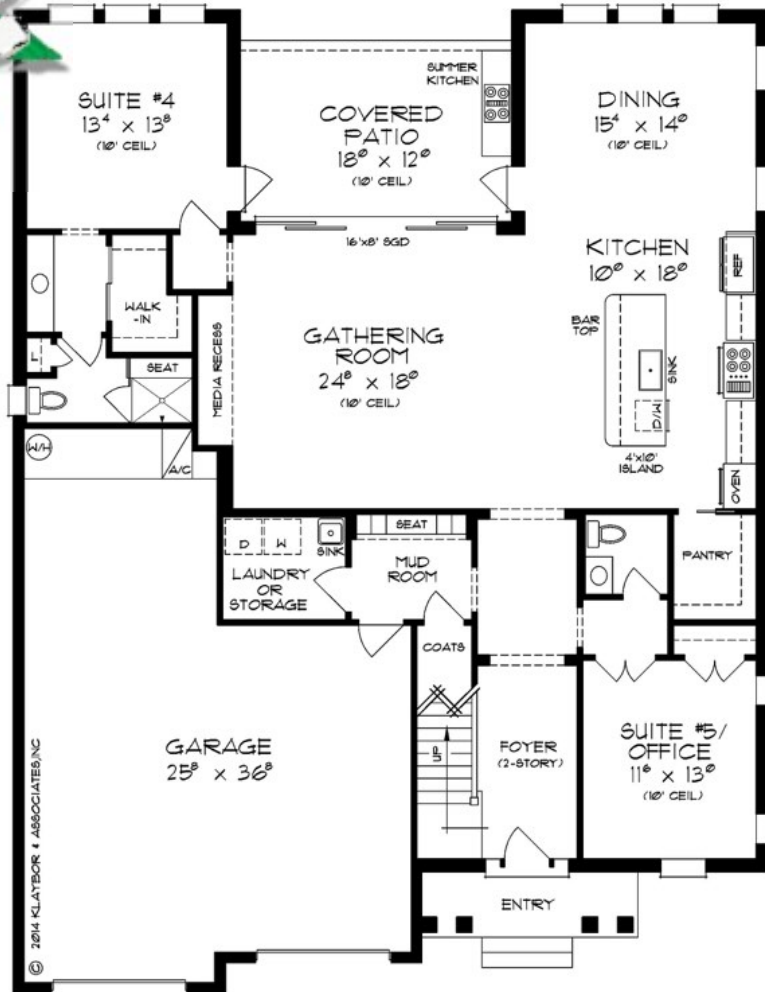
# Magnolia Homes, Inc.

Quality Concrete Block Homes  
Built with Care

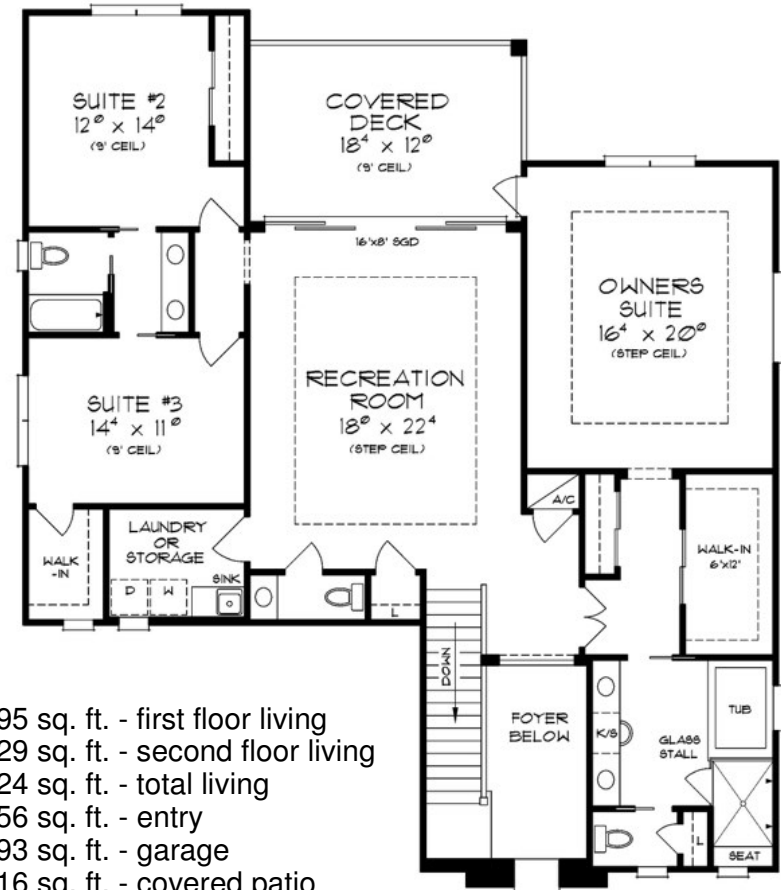


# "The Mill Cove"

3824 sq. ft. (living area)  
50' wide x 65' deep



FIRST FLOOR



SECOND FLOOR

- 1995 sq. ft. - first floor living
- 1829 sq. ft. - second floor living
- 3824 sq. ft. - total living
- 56 sq. ft. - entry
- 793 sq. ft. - garage
- 216 sq. ft. - covered patio
- 219 sq. ft. - covered deck
- 5108 sq. ft. - total covered